

Vacu-Maid Premium TurboKit

THE TK550 KIT INCLUDES:

- **SFH-230B** 30 ft. Low Voltage 2-Wire Swivel Hose
- **PB-490BLV** Blue Air Turbine Brush
- **W-419H** Telescopic Ratchet Wand
- **FB-215BLK** 12" Floor Brush
- **DB-630BLK** Premium Dusting Brush
- **UT-630BBLK** Premium Upholstery Tool
- **CT-630BLK** Premium Crevice Tool
- **CB-180** Mesh Caddy Bag
- **H-431** Hose Hanger
- **WWH-1** Wall Mounted Wand Holder
- **CT-3BL** Clip-On Tool Caddy



Things to Consider:

An air turbine floor brush uses the power of the vacuum to spin the brush roll instead of electricity, which can save you money.

- Since there is no power cord to the brush, transition to other tools is quick and easy.
- Natural fill brushes last longer and clean better than synthetic fills.
- Turbines can give you a good indication of when your power unit needs to be serviced by reflecting the power in the air stream.
- The low voltage hose allows you to control the power unit at the handle with less weight meaning less work.

VACU-MAID[®]
CENTRAL VACUUM SYSTEMS
www.vacumaid.com

Suited for:

For homes with extensive use of wall to wall carpeting, a premium air turbine kit is an alternative to an electric kit. Designed for both high-pile padded carpet and carpet laid directly on hard floors, the turbo brush provides great cleaning. With the additional tools, this kit is also suited for hard floor surfaces such as tile and wood, as well as above-the-floor cleaning.

Turbocat Brush



High Pile Carpeting



Low Pile Carpeting



Rugs

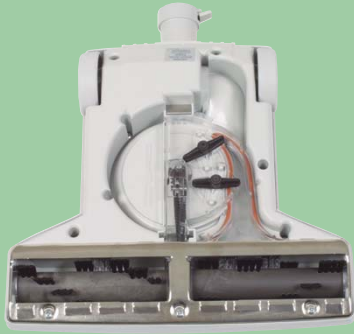
Floor Brush



Hard Floor Surfaces



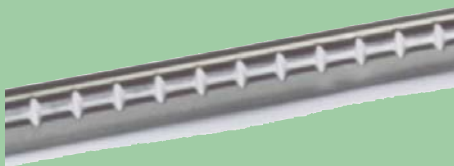
Special Kit Features:



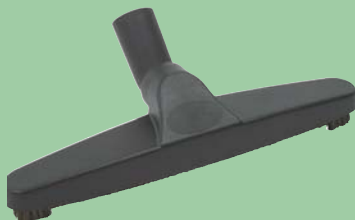
— A full 14" cleaning width —



Lightweight hose with excellent airflow.



Ratchet adjusts to user's needs.



Notched in front to prevent bull-dosing of dirt.



Molded in vinyl for a soft touch to protect fine furnishings.

• THE AIR DRIVEN POWERHEAD:

The low profile PB490BLV air turbine powerbrush is lightweight and highly maneuverable. It features a low-profile body for easy access under and around furnishings.

The specially designed cogged drive belt reduces slippage for a consistent performance and has a long life.

The DEEP SWEEP™ agitator brings deep-down dirt to the surface so it can be easily vacuumed away.

Edge to Edge Cleaning allows dirt to be vacuumed up to its full carpet-cleaning ability.

Automatically adjusts to the height of the carpet.

System Performance Indicator (SPI) lets you know if you've lost airflow by slowing down.

The brush has a high-impact bumper guard that helps protect nearby furnishings while vacuuming.

• THE LOW VOLTAGE HOSE:

The low voltage hose brings you unsurpassed airflow and flexibility. The handle is designed to reduce the effort in cleaning with 360° swivel and a profile that allows the hose to drop more directly to the floor reducing the weight in your hand.

The stainless steel stub tube is ideal for applications where durability and quality are critical. Also, this crush proof hose is the lightest and most flexible available.

• TELESCOPIC RATCHET WAND:

The telescopic ratchet wand can be adjusted to necessary heights to lessen back strain.

• FLOOR BRUSH:

The twelve inch floor brush won't push the dirt in front of the tool due to the unique cut of the natural fill. Great edge cleaning and the ideal shape to get in and around furnishings and cabinets, makes this the most user-friendly hard floor tool around.

• THE ACCESSORIES FOR EVERYDAY CLEANING:

The soft PVC dusting brush won't mark or scratch furnishings and has a full natural fill for gentle cleaning and long life.

The upholstery tool won't seal to the floor or upholstery. Keeping the airflow is necessary for effective cleaning. The directional brush inset helps release imbedded or stuck-on dirt from your stairs or the floor of your car.

A full length crevice tool with notched end ensures you keep the air moving when you go down along a car seat or in the corner of stair risers. If you don't move air, you won't move dirt.

A clip-on tool caddy allows you to mount your accessories to your cleaning wand so that they are there when you need them, not back in the closet.

Add a hose hanger for storing the hose, wall mounted wand holder to hold the wand and a mesh caddy bag to hold all of your tools to and from, and you have a complete home cleaning system to complement your Vacu-Maid central vacuum system.